

LINKSYS®

A Division of Cisco Systems, Inc.

Secure, reliable, intelligent, high density managed switching for your network core

The Linksys WebView Managed switch allows you to expand your network securely. Configuration of the switch is secured using SSL for Web access and SSH for Telnet access. User control is secured using 802.1x security using a RADIUS authentication mechanism and can also be controlled using MAC filtering.

Extensive Quality of Service (QoS) features make the solution ideal for real-time applications like Voice and Video. The 4 priority queues together with the Weighted Round Robin and Strict Priority scheduling techniques facilitate efficient co-existence of real-time traffic with data traffic allowing them each to meet their QoS needs. Individual users or applications can be prioritized above others using various Class of Service options – by port, Layer 2 priority (802.1p), Layer 3 priority (TOS or DSCP)*, or IPv6 Traffic Class*. Intelligent Broadcast, Multicast, and Unknown Unicast storm control minimizes and contains the effect of these types of traffic on regular traffic. IGMP Snooping limits bandwidth-intensive video traffic to only the requestors without flooding to all users. Incoming traffic can be policed and outgoing traffic can be shaped allowing you to control network access and traffic flow.

There are features that allow you to expand and grow your network of switches. Link aggregation allows multiple high-bandwidth trunks between switches to be setup. Spanning Tree, Rapid Spanning Tree, and Multiple Spanning Tree allow you to build a mesh of switches increasing the availability of the system. This also provides a level of reliability in that the system continues to operate even if one of the links breaks.

The rich management functionality of the WebView switches includes SNMP, RMON, Telnet, and HTTP Management options, allowing you to flexibly integrate and manage these devices in your network.

* Future firmware release

- **Optimized to be your network core with very high performance and density**
- **Secure management via SSH/SSL and secure user control via 802.1x & MAC filtering**
- **IGMP snooping, L2/L3 COS, queuing & scheduling makes solution ideal for Voice/Video**
- **Intelligent traffic management with Rate Limiting, Policing, Shaping, and Storm Control**



**48-port
10/100/1000
Switch
+ 4 shared
mini-GBIC Ports
with WebView**

PRODUCT SHEET

BUSINESS SERIES

Model No: **SRW2048**

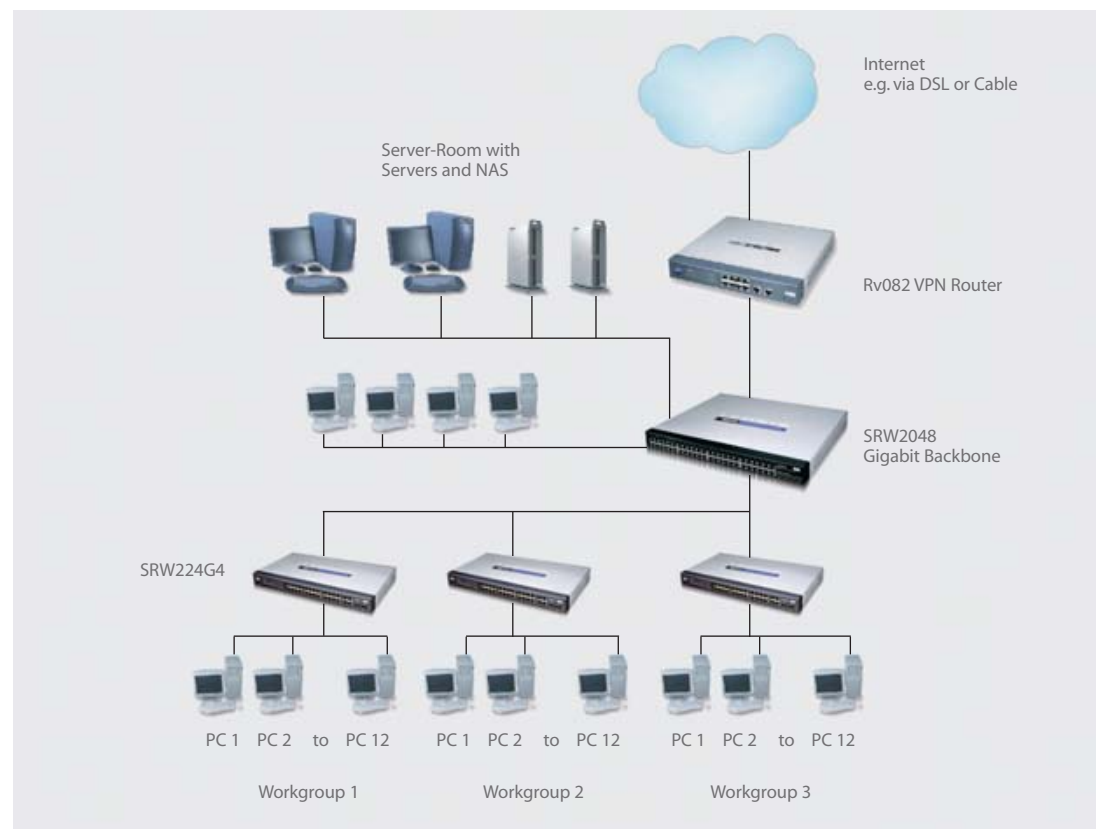


48-port 10/100/1000 Switch + 4 shared mini-GBIC Ports with WebView

Features

- 48 - 10/100/1000 Switched RJ-45 ports
- 4 shared mini-GBIC ports
- WebView monitoring allows administrators to view the current status and configuration using their favorite web browser
- Port based and 802.1q based VLANs support up to 256 VLANs
- Port Trunking for up to 8 groups allows you to increase your bandwidth for each uplink or server connection
- Port configuration settings for link, speed, auto MDI/MDIX, flow control, and more
- Fully rack-mountable using the included rack-mounting hardware
- Auto MDI/MDIX per port allows for automatic cable detection
- MAC address table supports up to 8K MAC address entries
- Optimal platform to support real-time applications like voice and video by providing features like IGMP snooping, multiple queues (4) with appropriate scheduling techniques, prioritization of traffic based on L2/L3 priority*, and line rate forwarding mechanisms
- Secure control via SSH for Telnet interface and SSL for HTTP interface
- User/Network security via 802.1x (with RADIUS authentication) and MAC-based filtering
- Containment of storms - Broadcast, Multicast, and Unknown Unicast
- Expandability and availability increased across multiple switches using Link Aggregation
- SNMP and RMON management expand your visibility options

The SRW2048 is the heart of your network; connecting servers, other switches or workstations at Gigabit speed



Specifications

Ports	48 RJ-45 connectors for 10BASE-T, 100BASE-TX, and 1000BASE-T with 4 shared SFP slots
Cabling Type	UTP Cat5 or better for 10BASE-T/100BASE-TX, UTP Cat5e or better for 1000BASE-T
LED Indicators	Power, Link/Act, Speed

Performance

Switching Capacity	96 Gbps, non-blocking
MAC Table Size	8k
Number of VLANs	256 - Static (Today) and dynamic (Future)

Management

Web User Interface	Built-in Web UI for easy browser-based configuration (HTTP/HTTPS)
SNMP	SNMP version v1, v2c, and v3 with support for traps
SNMP MIBs	RFC1213 MIB-2, RFC2863 Interface MIB, RFC2665 Ether-like MIB, RFC1493 Bridge MIB, RFC2674 Extended Bridge MIB (P-bridge, Q-bridge), RFC2819 RMON MIB (groups 1,2,3,9 only), RFC2737 Entity MIB, RFC2618 RADIUS Client MIB
RMON	Embedded Remote Monitoring (RMON) software agent supports four RMON groups (history, statistics, alarms, and events) for enhanced traffic management, monitoring, analysis.
Firmware Upgrade	Web browser upgrade (HTTP), TFTP upgrade
Port Mirroring	Traffic on a port can be mirrored to another port for analysis with a network analyzer or RMON probe.
Other Management	RFC854 Telnet (menu-driven configuration), Secure Shell (SSH) and Telnet Management, Telnet Client, SSL security for Web UI, Switch Audit Log, DHCP client, BootP, SNMP, Xmodem upgrade, cable diagnostics, Ping, Traceroute

Security

IEEE 802.1x Access Control	802.1x - RADIUS Authentication, MD5 Encryption Filtering: MAC-based*
----------------------------	---

Availability

Link Aggregation	Link Aggregation using IEEE 802.3ad LACP, up to 8 ports in up to 8 groups
Storm Control	Broadcast, Multicast, and Unknown Unicast
Spanning Tree	IEEE 802.1d Spanning Tree, IEEE 802.1s Multiple Spanning Tree, IEEE 802.1w Rapid Spanning Tree, Fast Linkover
IGMP Snooping	IGMP (v1/v2) snooping provides for fast client joins and leaves of multi-cast streams and limits bandwidth-intensive video traffic to only the requestors.

Quality of Service

Priority Levels	4 Hardware queues
Scheduling	Priority Queueing and Weighted Round Robin (WRR)
Class of Service	Port-based, 802.1p VLAN priority based, IP TOS/DSCP based, IPv4 Traffic Class based COS
Rate Limiting	Ingress Policer, Egress Shaper



* Future firmware release

PRODUCT SHEET

BUSINESS SERIES

48-port 10/100/1000 Switch + 4 shared mini-GBIC Ports with WebView

Layer 2

VLAN	Port-based and 802.1q based VLANs, Private VLAN Edge (PVE), Management VLAN
HOL Blocking	Head of line blocking prevention

Standards

Standards	802.3i 10BASE-T Ethernet, 802.3u 100BASE-TX Fast Ethernet, 802.3ab 1000BASE-T Gigabit Ethernet, 802.3z Gigabit Ethernet, 802.3x Flow Control
-----------	--

Environmental

Dimensions	16.93" x 1.75" x 13.78" (430 mm x 44.45 mm x 350 mm)
Unit Weight	8.60 lbs. (3.9 kg)
Power Input	Internal switching power
Certifications	FCC Part15 Class A, CE Class A, UL, cUL, CE mark, CB
Operating Temp.	32°F to 122°F (0°C to 50°C)
Storage Temp.	-4°F to 158°F (-20°C to 70°C)
Operating Humidity	10% to 90%, non-condensing
Storage Humidity	10% to 95%, non-condensing
Warranty	5 years

Minimum Requirements

- Web-based configuration Java-enabled browser
- Cat5 Ethernet network cable
- TCP/IP protocol installed on each computer within the network
- Network adapter installed in each computer
- Network operating system (e.g. Windows®, Linux, MacOS X)

Package Contents

- One SRW2048 switch
- One power cord
- One rack mounting kit
- One CD with user guide in PDF format
- One registration card
- Console cable

Linksys
A Division of Cisco Systems, Inc.
Web: www.linksys.com/uk
E-mail: support.uk@linksys.com

Linksys products are available in more than 50 countries, supported by 12 Linksys Regional Offices throughout the world. For a complete list of local Linksys Sales and Technical Support contacts, visit our Worldwide Web Site at www.linksys.com.

PRODUCT SHEET

BUSINESS SERIES

LINKSYS®
A Division of Cisco Systems, Inc.

Specifications are subject to change without notice. Linksys is a registered trademark or trademark of Cisco Systems, Inc. and/or its affiliates in the U.S. and certain other countries. Copyright © 2006 Cisco Systems, Inc. All rights reserved. Other brands and product names are trademarks or registered trademarks of their respective holders.

Model No: **SRW2048**